

\$599,000 - 8703 142 Street, Edmonton

MLS® #E4420764

\$599,000

0 Bedroom, 0.00 Bathroom,
Single Family on 0.00 Acres

Parkview, Edmonton, AB

MASSIVE PIE shaped vacant lot ready for development in PARKVIEW... 61'F X 125' D
Minutes to downtown, Walking distance to Edmonton's beautiful river valley, shopping, restaurants and public transportation.

Essential Information

MLS® #	E4420764
Price	\$599,000
Bathrooms	0.00
Acres	0.00
Type	Single Family
Sub-Type	Vacant Lot/Land
Status	Active

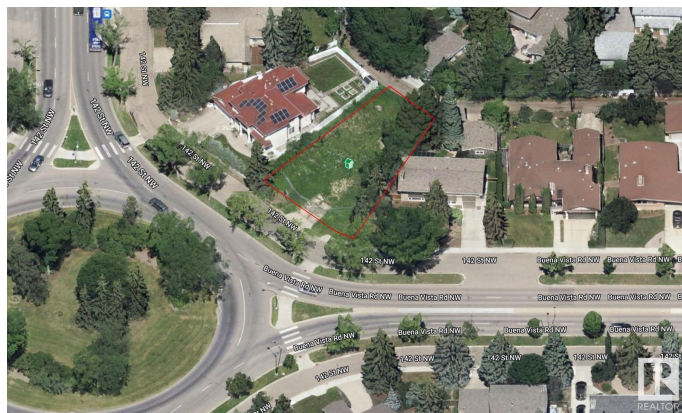
Community Information

Address	8703 142 Street
Area	Edmonton
Subdivision	Parkview
City	Edmonton
County	ALBERTA
Province	AB
Postal Code	T5R 0M3

Exterior

Exterior Features See Remarks

Additional Information



Date Listed February 6th, 2025

Days on Market 172

Zoning Zone 10

DATA IS DEEMED RELIABLE BUT IS NOT GUARANTEED ACCURATE BY THE REALTORS® ASSOCIATION OF EDMONTON. COPYRIGHT 2025 BY THE REALTORS® ASSOCIATION OF EDMONTON. ALL RIGHTS RESERVED. Trademarks are owned or controlled by the Canadian Real Estate Association (CREA) and identify real estate professionals who are members of CREA (REALTOR®, REALTORS®) and/or the quality of services they provide (MLS®, Multiple Listing Service®)

Listing information last updated on July 28th, 2025 at 12:03pm MDT