

\$110,000 - 1001 13910 Stony Plain Road, Edmonton

MLS® #E4443894

\$110,000

1 Bedroom, 1.00 Bathroom, 714 sqft
Condo / Townhouse on 0.00 Acres

Glenora, Edmonton, AB

Welcome to this spacious 1-bedroom, 1-bathroom apartment in the heart of Glenora, offering approx. 715 sq ft of comfortable living space. Situated in a prime location, this unit is close to all amenities – including shopping, cafes, restaurants, parks, and public transit. Everything you need is just minutes from your door. Features & Highlights: Open-concept living/dining area. Access to swimming pool, Sauna and fitness centre. Well-maintained building with professional management. Surrounded by beautiful, tree-lined streets. This is a fantastic opportunity for first-time buyers, downsizers, or investors looking to own in one of Edmonton’s most desirable communities.



Built in 1969

Essential Information

MLS® #	E4443894
Price	\$110,000
Bedrooms	1
Bathrooms	1.00
Full Baths	1
Square Footage	714
Acres	0.00
Year Built	1969
Type	Condo / Townhouse

Sub-Type	Apartment High Rise
Style	Single Level Apartment
Status	Active

Community Information

Address	1001 13910 Stony Plain Road
Area	Edmonton
Subdivision	Glenora
City	Edmonton
County	ALBERTA
Province	AB
Postal Code	T5N 3R2

Amenities

Amenities	Exercise Room, Pool-Indoor,
Parking	Underground, See Remarks
Has Pool	Yes

Interior

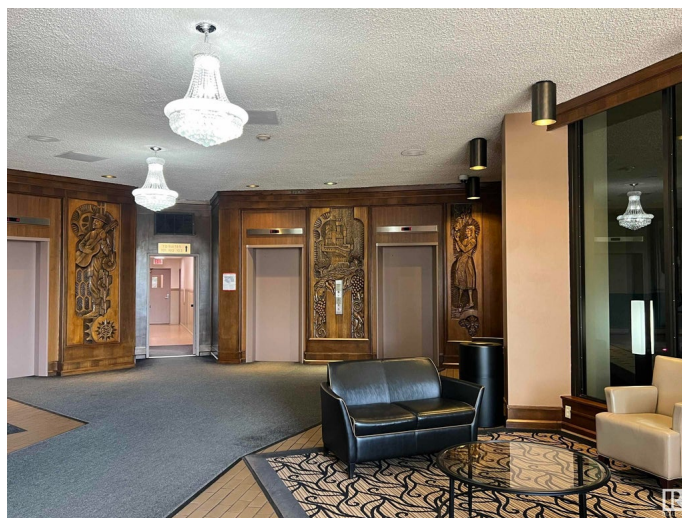
Appliances	See Remarks
Heating	Baseboard, Water
# of Stories	18
Stories	9
Has Basement	Yes
Basement	None, No Basement

Exterior

Exterior	Concrete, Stucco
Exterior Features	Shopping Nearby, View City, View Downtown
Roof	Flat
Construction	Concrete, Stucco
Foundation	Concrete Perimeter

Additional Information

Date Listed	June 23rd, 2025
Days on Market	55
Zoning	Zone 11
Foreclosure	Yes
Condo Fee	\$651



DATA IS DEEMED RELIABLE BUT IS NOT GUARANTEED ACCURATE BY THE REALTORS® ASSOCIATION OF EDMONTON. COPYRIGHT 2025 BY THE REALTORS® ASSOCIATION OF EDMONTON. ALL RIGHTS RESERVED.Trademarks are owned or controlled by the Canadian Real Estate Association (CREA) and identify real estate professionals who are members of CREA (REALTOR®, REALTORS®) and/or the quality of services they provide (MLS®, Multiple Listing Service®)

Listing information last updated on August 16th, 2025 at 9:31pm MDT