

Courtesy Of Nathan Lorenz Of Real Broker

\$119,900 - 305 45 Akins Drive, St. Albert

MLS® #E4445304

\$119,900

2 Bedroom, 1.00 Bathroom, 912 sqft
Condo / Townhouse on 0.00 Acres

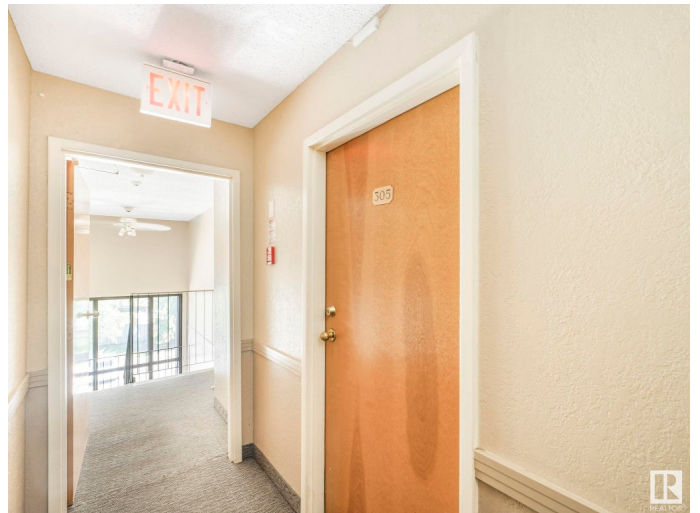
Akinsdale, St. Albert, AB

Welcome to this TOP FLOOR 912 SF 2 bedroom condo in Akinsdale one of the most desirable neighborhoods in St. Albert. Stepping inside you will notice tasteful upgrades with new flooring and paint throughout the unit. The living room features a WOOD-BURNING fireplace and access to your private north-facing balcony. The kitchen is designed with plenty of counter space, wood cabinet doors, and features a dishwasher. Next to the kitchen is a well positioned dining room or breakfast nook. Down the hall is both good sized bedrooms. The primary includes a WALK-IN CLOSET and a pass through to the 4 pc bathroom with a large vanity. The unit is supplied with its own forced air high efficiency furnace and HWT. Down the hall on the same floor is the common laundry. Outside this unit is equipped with 1 surface parking stall. Fantastic location which is close to shopping, schools, parks, walking trails and just mins from Anthony Henday or St. Albert Trail. This is a must see.

Built in 1980

Essential Information

MLS® #	E4445304
Price	\$119,900
Bedrooms	2



Bathrooms	1.00
Full Baths	1
Square Footage	912
Acres	0.00
Year Built	1980
Type	Condo / Townhouse
Sub-Type	Lowrise Apartment
Style	Single Level Apartment
Status	Active

Community Information

Address	305 45 Akins Drive
Area	St. Albert
Subdivision	Akinsdale
City	St. Albert
County	ALBERTA
Province	AB
Postal Code	T8N 2P4

Amenities

Amenities	Off Street Parking, On Street Parking, Parking-Visitor, Security Door, Storage-In-Suite
Parking Spaces	1
Parking	Stall

Interior

Interior Features	ensuite bathroom
Appliances	Dishwasher-Built-In, Refrigerator, Stove-Electric
Heating	Forced Air-1, Natural Gas
Fireplace	Yes
Fireplaces	Brick Facing, Masonry
# of Stories	3
Stories	1
Has Basement	Yes
Basement	None, No Basement

Exterior

Exterior	Wood, Vinyl
Exterior Features	Backs Onto Park/Trees, Fenced, Flat Site, Golf Nearby, Playground

Nearby, Schools, Shopping Nearby

Roof Asphalt Shingles
Construction Wood, Vinyl
Foundation Concrete Perimeter

School Information

Elementary Elmer S. Gish School
Middle Elmer S. Gish School
High Paul Kane High School

Additional Information

Date Listed July 2nd, 2025
Days on Market 43
Zoning Zone 24
Condo Fee \$464

DATA IS DEEMED RELIABLE BUT IS NOT GUARANTEED ACCURATE BY THE REALTORS® ASSOCIATION OF EDMONTON. COPYRIGHT 2025 BY THE REALTORS® ASSOCIATION OF EDMONTON. ALL RIGHTS RESERVED. Trademarks are owned or controlled by the Canadian Real Estate Association (CREA) and identify real estate professionals who are members of CREA (REALTOR®, REALTORS®) and/or the quality of services they provide (MLS®, Multiple Listing Service®)

Listing information last updated on August 14th, 2025 at 12:47am MDT