

\$529,900 - 5936 209 Street, Edmonton

MLS® #E4447164

\$529,900

4 Bedroom, 3.50 Bathroom, 1,800 sqft

Single Family on 0.00 Acres

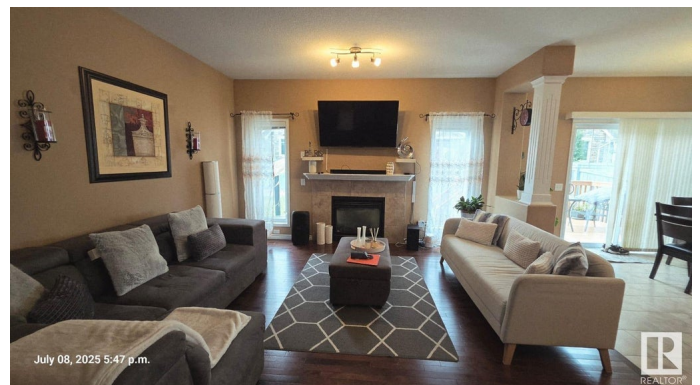
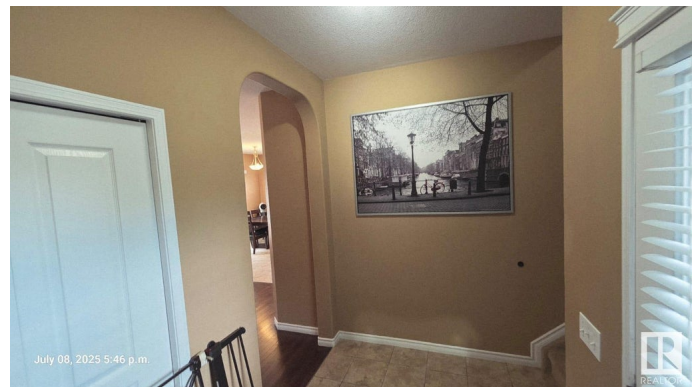
The Hamptons, Edmonton, AB

1800 SQ. FT. 2 STOREY.....TOTAL OF 4 BEDROOMS AND 3.5 BATHROOMS.....9 FT. CEILINGS ON BOTH MAIN FLOOR AND BASEMENT.....HARDWOOD AND CERAMIC TILE FLOORS ON THE MAIN FLOOR....GAS FIREPLACE....STAINLESS STEEL KITCHEN APPLIANCES....2 PC. MAIN FLOOR BATHMUDROOM WITH LAUNDRY AREA.....FAMILY ROOM ABOVE THE GARAGE GREAT FOR ENTERTAINING....PRIMARY BEDROOM HAS HIS/HERS CLOSETS AND 4 PC ENSUITE BATH WITH JETTED TUB....BASEMENT IS ALMOST FULLY FINISHED WITH A BEDROOM AND A FULL 3 PC. BATHROOM....PIE SHAPED LOT.... LARGE BACKYARD WITH DECK AND STORAGE SHED.....HURRY! DON'T MISS THIS GREAT OPPORTUNITY!

Built in 2010

Essential Information

| | |
|----------------|-----------|
| MLS® # | E4447164 |
| Price | \$529,900 |
| Bedrooms | 4 |
| Bathrooms | 3.50 |
| Full Baths | 3 |
| Half Baths | 1 |
| Square Footage | 1,800 |



| | |
|------------|------------------------|
| Acres | 0.00 |
| Year Built | 2010 |
| Type | Single Family |
| Sub-Type | Detached Single Family |
| Style | 2 Storey |
| Status | Active |

Community Information

| | |
|-------------|-----------------|
| Address | 5936 209 Street |
| Area | Edmonton |
| Subdivision | The Hamptons |
| City | Edmonton |
| County | ALBERTA |
| Province | AB |
| Postal Code | T6M 0L1 |

Amenities

| | |
|-----------|---|
| Amenities | Ceiling 9 ft., Deck, 9 ft. Basement Ceiling |
| Parking | Double Garage Attached |

Interior

| | |
|-------------------|--|
| Interior Features | ensuite bathroom |
| Appliances | Dishwasher-Built-In, Dryer, Hood Fan, Refrigerator, Stove-Electric, Washer, Window Coverings |
| Heating | Forced Air-1, Natural Gas |
| Stories | 3 |
| Has Basement | Yes |
| Basement | Full, Partially Finished |

Exterior

| | |
|-------------------|--------------------------------|
| Exterior | Wood, Vinyl |
| Exterior Features | Cul-De-Sac, Fenced, Landscaped |
| Roof | Asphalt Shingles |
| Construction | Wood, Vinyl |
| Foundation | Concrete Perimeter |

Additional Information

| | |
|----------------|-----------------|
| Date Listed | July 11th, 2025 |
| Days on Market | 10 |

Zoning

Zone 58

DATA IS DEEMED RELIABLE BUT IS NOT GUARANTEED ACCURATE BY THE REALTORS® ASSOCIATION OF EDMONTON. COPYRIGHT 2025 BY THE REALTORS® ASSOCIATION OF EDMONTON. ALL RIGHTS RESERVED. Trademarks are owned or controlled by the Canadian Real Estate Association (CREA) and identify real estate professionals who are members of CREA (REALTOR®, REALTORS®) and/or the quality of services they provide (MLS®, Multiple Listing Service®)

Listing information last updated on July 21st, 2025 at 7:18pm MDT