

\$429,989 - 5406 14 Avenue, Edmonton

MLS® #E4448311

\$429,989

3 Bedroom, 2.50 Bathroom, 1,463 sqft

Single Family on 0.00 Acres

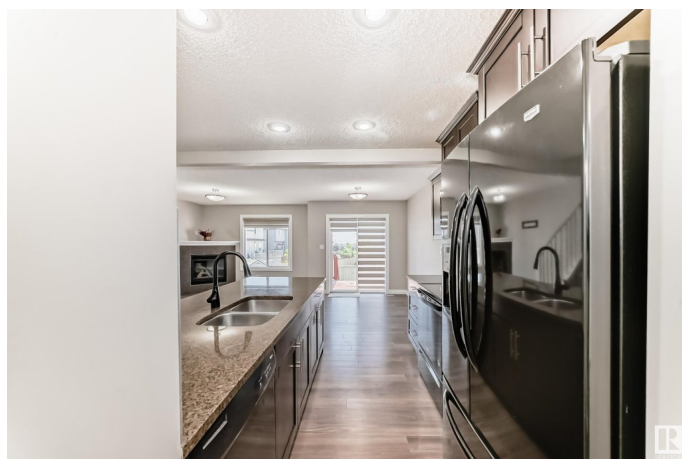
Walker, Edmonton, AB

This exquisite half duplex with attached garage is located in the desirable family friendly community of Walker. The bright entrance leads to a stunning kitchen adorned with granite countertops. The open-plan living room, warmed by a cozy fireplace, and the dining area open onto a deck that overlooks your tranquil backyard retreat, perfect for unwinding or for entertaining. Upstairs includes a large master bedroom with an ensuite bathroom, two additional bedrooms, 4pc bathroom and a laundry. Partially finished basement await for your personal touch. Easy access to 66 Street, Anthony Henday, Schools, Transits and all major grocery stores. A great home in a convenient location!

Built in 2012

Essential Information

| | |
|----------------|-----------|
| MLS® # | E4448311 |
| Price | \$429,989 |
| Bedrooms | 3 |
| Bathrooms | 2.50 |
| Full Baths | 2 |
| Half Baths | 1 |
| Square Footage | 1,463 |
| Acres | 0.00 |
| Year Built | 2012 |



| | |
|----------|---------------|
| Type | Single Family |
| Sub-Type | Half Duplex |
| Style | 2 Storey |
| Status | Active |

Community Information

| | |
|-------------|----------------|
| Address | 5406 14 Avenue |
| Area | Edmonton |
| Subdivision | Walker |
| City | Edmonton |
| County | ALBERTA |
| Province | AB |
| Postal Code | T6X 1S2 |

Amenities

| | |
|-----------|------------------------|
| Amenities | Deck |
| Parking | Single Garage Attached |

Interior

| | |
|-------------------|---|
| Interior Features | ensuite bathroom |
| Appliances | Dishwasher-Built-In, Dryer, Garage Control, Garage Opener, Refrigerator, Stove-Electric, Washer |
| Heating | Forced Air-1, Natural Gas |
| Stories | 2 |
| Has Basement | Yes |
| Basement | Full, Partially Finished |

Exterior

| | |
|-------------------|---|
| Exterior | Wood, Asphalt, Concrete, Vinyl |
| Exterior Features | Landscaped, Public Transportation, Schools, Shopping Nearby |
| Roof | Asphalt Shingles |
| Construction | Wood, Asphalt, Concrete, Vinyl |
| Foundation | Concrete Perimeter |

Additional Information

| | |
|----------------|-----------------|
| Date Listed | July 17th, 2025 |
| Days on Market | 6 |
| Zoning | Zone 53 |

DATA IS DEEMED RELIABLE BUT IS NOT GUARANTEED ACCURATE BY THE REALTORS® ASSOCIATION OF

EDMONTON. COPYRIGHT 2025 BY THE REALTORS® ASSOCIATION OF EDMONTON. ALL RIGHTS RESERVED.Trademarks are owned or controlled by the Canadian Real Estate Association (CREA) and identify real estate professionals who are members of CREA (REALTOR®, REALTORS®) and/or the quality of services they provide (MLS®, Multiple Listing Service®)

Listing information last updated on July 23rd, 2025 at 9:17am MDT