

## \$185,555 - 209 155 Edwards Drive, Edmonton

MLS® #E4459458

**\$185,555**

2 Bedroom, 2.00 Bathroom, 832 sqft

Condo / Townhouse on 0.00 Acres

Ellerslie, Edmonton, AB

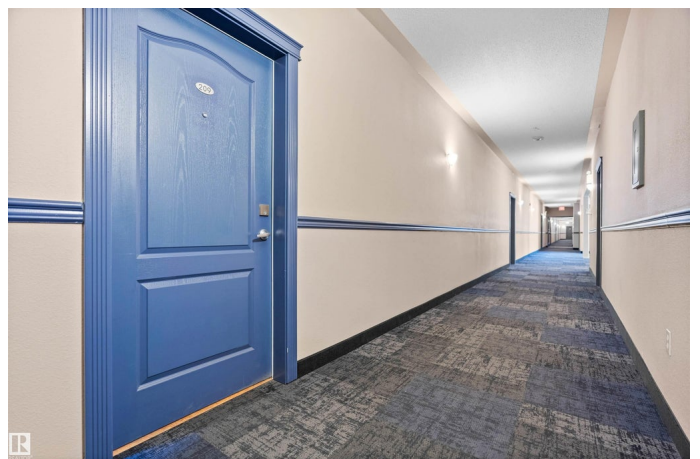
Priced to move and steps to Walmart & Superstore, this west-facing 2 bed, 2 bath condo with in-suite laundry in Park Place Ellerslie delivers value and convenience in one. Offering 835 sq ft. on the 2nd floor with no carpet (updated cork flooring; lino in baths/storage), the open kitchen—complete with a new fridge—flows into a bright living room and a sunny balcony for evening downtime. The smart split layout features a primary suite with a double-sided walk-through closet and 4-pc ensuite, while the second bedroom sits on the opposite side for privacy, adjacent to the main bath, in-suite laundry, and oversized storage. Extras include 2 car heated underground tandem stall, two elevators, a fitness room, and an ETS stop right out front for convenience. With quick access to Anthony Henday and South Edmonton Common, this is one of the most competitively priced 2-bedrooms in the complex—a standout choice for first-time buyers, downsizers, or investors.. maybe rent each room separately?

Built in 2005

### Essential Information

MLS® # E4459458

Price \$185,555



Bedrooms	2
Bathrooms	2.00
Full Baths	2
Square Footage	832
Acres	0.00
Year Built	2005
Type	Condo / Townhouse
Sub-Type	Lowrise Apartment
Style	Single Level Apartment
Status	Active

### Community Information

Address	209 155 Edwards Drive
Area	Edmonton
Subdivision	Ellerslie
City	Edmonton
County	ALBERTA
Province	AB
Postal Code	T6X 1N6

### Amenities

Amenities	Off Street Parking, Closet Organizers, Deck, Detectors Smoke, Exercise Room, Parking-Plug-Ins, Parking-Visitor, Secured Parking, Security Door, Sprinkler System-Fire, Storage-In-Suite, Television Connection, Vinyl Windows
Parking	Heated, Tandem, Underground

### Interior

Interior Features	ensuite bathroom
Appliances	Dishwasher-Built-In, Microwave Hood Fan, Refrigerator, Stacked Washer/Dryer, Stove-Electric
Heating	Baseboard, Natural Gas
# of Stories	4
Stories	1
Has Basement	Yes
Basement	None, No Basement

### Exterior

Exterior	Wood, Vinyl
----------	-------------

Exterior Features	Airport Nearby, Fenced, Flat Site, Golf Nearby, Landscaped, Playground Nearby, Public Transportation, Schools, Shopping Nearby, Ski Hill Nearby, Treed Lot
Roof	Asphalt Shingles
Construction	Wood, Vinyl
Foundation	Concrete Perimeter

**School Information**

Elementary	Sakaw School
Middle	Kisāwā̃tisiwin School
High	J. Percy Page School

**Additional Information**

Date Listed	September 25th, 2025
Days on Market	2
Zoning	Zone 53
Condo Fee	\$584

DATA IS DEEMED RELIABLE BUT IS NOT GUARANTEED ACCURATE BY THE REALTORS® ASSOCIATION OF EDMONTON. COPYRIGHT 2025 BY THE REALTORS® ASSOCIATION OF EDMONTON. ALL RIGHTS RESERVED.Trademarks are owned or controlled by the Canadian Real Estate Association (CREA) and identify real estate professionals who are members of CREA (REALTOR®, REALTORS®) and/or the quality of services they provide (MLS®, Multiple Listing Service®)

Listing information last updated on September 27th, 2025 at 1:47am MDT